

Know Your Source: ACHE Student Source Survey

<http://www.ache.alabama.gov/Content/StudentDB/SDBReports.aspx>

Jon Acker, The University of Alabama



ALABAMA Commission On Higher Education

Home

About Us

Commission Meetings

Public/Student

Institutional

Corp/Gov

Reports

Archive

Student Database Reports

+ Institutional Student Profiles

+ High School Feedback Reports

+ Retention Reports

- Student Source Survey Reports

Provides summary information based on the county, state and country a student is from. Reports indicate student enrollment for each institution.

2016

2015

2014

+ Tuition and Residency Reports

+ Tuition Eligibility Reports

+ Transfer/Migration Reports

+ Institutional Enrollment Summary Reports

+ Institutional Completions Summary Reports

NOTE: Click [here](#) to view Older Reports.

Navigation

Select Link Below

FAQ

Agency Calendar

Colleges/Universities

Education & Career Links

Existing Student Loan Inquiries

Student Complaint Process

Employment Announcements

Request For Proposals

Contact Us

Click on map for details





ALABAMA Commission On Higher Education

[Home](#)[About Us](#)[Commission Meetings](#)[Public/Student](#)[Institutional](#)[Corp/Gov](#)[Reports](#)[Archive](#)

Fall 2016 Student Source Survey

Summary

1.	All Students	Excel	PDF
2.	All Undergraduates	Excel	PDF
3.	All First-time Freshmen	Excel	PDF
4.	All Graduates	Excel	PDF
5.	First-time Graduates	Excel	PDF

Four-Year By County

6.	All Undergraduates	Excel	PDF
7.	First-time Freshmen	Excel	PDF
8.	All Transfer Students	Excel	PDF
9.	All Other Undergraduate Students	Excel	PDF
10.	All Graduate Students	Excel	PDF
11.	First-time Graduate Students	Excel	PDF
12.	All Other Graduate Students	Excel	PDF

Two-Year By County

13.	All Undergraduate Students	Excel	PDF
14.	First-time Freshmen	Excel	PDF
15.	All Transfer Students	Excel	PDF
16.	All Other Undergraduate Students	Excel	PDF

Four-Year By State

17.	All Undergraduate Students	Excel	PDF
18.	All First-time Freshmen	Excel	PDF
19.	All Undergraduate Transfer Students	Excel	PDF
20.	All Other Undergraduate Students	Excel	PDF
21.	All Graduate Students	Excel	PDF
22.	All First-time Graduate Students	Excel	PDF
23.	All Other Graduate Students	Excel	PDF

Two-Year By State

24.	All Undergraduate Students	Excel	PDF
25.	All First-time Freshmen	Excel	PDF
26.	All Undergraduate Transfers	Excel	PDF
27.	All Other Undergraduates	Excel	PDF

Four-Year By Foreign Countries

28.	All Undergraduates	Excel	PDF
29.	All Graduates	Excel	PDF

Two-Year By Foreign Countries

30.	All Undergraduate Students	Excel	PDF
-----	----------------------------	-------	-----

Navigation

[Select Link Below](#)[FAQ](#)[Agency Calendar](#)[Colleges/Universities](#)[Education & Career Links](#)[Existing Student Loan Inquiries](#)[Student Complaint Process](#)[Employment Announcements](#)[Request For Proposals](#)[Contact Us](#)

Click on map for details





ALABAMA Commission On Higher Education

[Home](#)[About Us](#)[Commission Meetings](#)[Public/Student](#)[Institutional](#)[Corp/Gov](#)[Reports](#)[Archive](#)

Student Database Archived Reports

[+ Institutional Student Profiles](#)[+ High School Feedback Reports](#)[+ Retention Reports](#)[- Student Source Survey Reports](#)

Provides summary information based on the county, state and country a student is from. Reports indicate student enrollment for each institution.

2013	2012	2011	2010	2009	2008
2007	2006	2005	2004	2003	2002

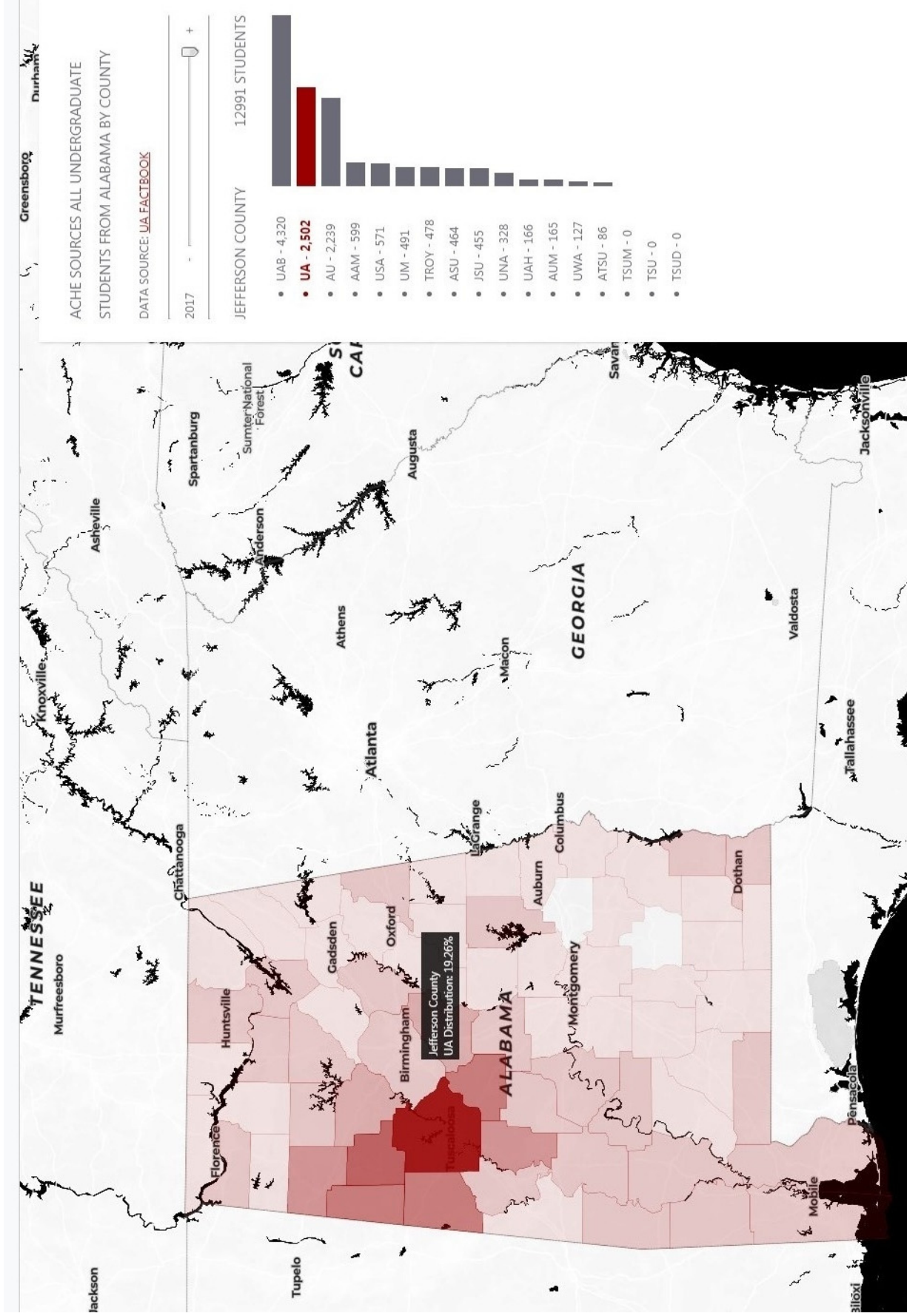
[+ Tuition and Residency Reports](#)[+ Tuition Eligibility Reports](#)[+ Transfer/Migration Reports](#)[+ Institutional Enrollment Summary Reports](#)[+ Institutional Completions Summary Reports](#)[+ Enrollment Summary Reports](#)[+ Completions Summary Reports](#)[+ Data Dictionaries](#)[+ File Layouts](#)[+ Data Edits](#)[+ Naming Conventions](#)[Summary and Technical Information](#)

Navigation

[Select Link Below](#)[FAQ](#)[Agency Calendar](#)[Colleges/Universities](#)[Education & Career Links](#)[Existing Student Loan Inquiries](#)[Student Complaint Process](#)[Employment Announcements](#)[Request For Proposals](#)[Contact Us](#)

Click on map for details



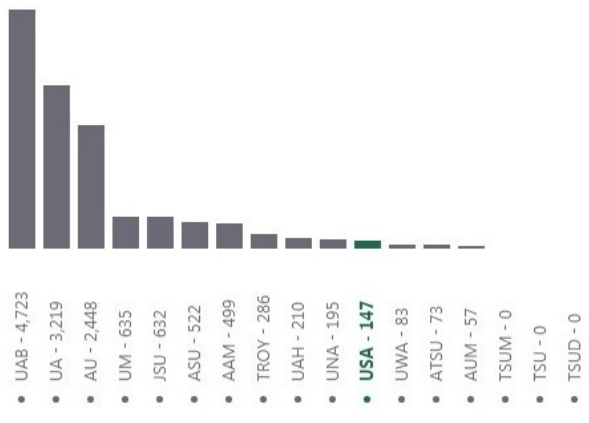


ACHE SOURCES ALL UNDERGRADUATE STUDENTS FROM ALABAMA BY COUNTY

DATA SOURCE: [UA FACTBOOK](#)

2007 +

JEFFERSON COUNTY 13729 STUDENTS

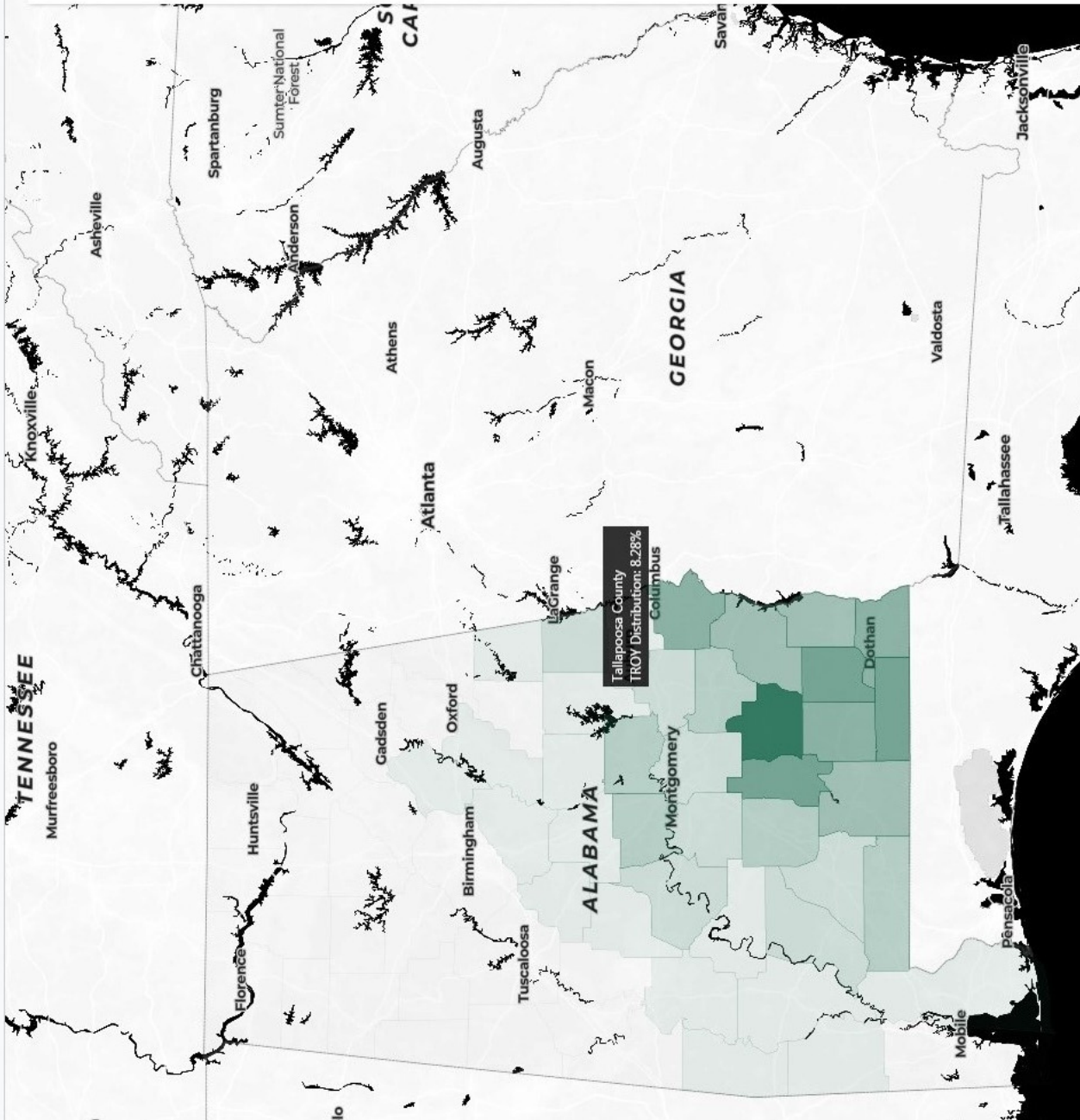


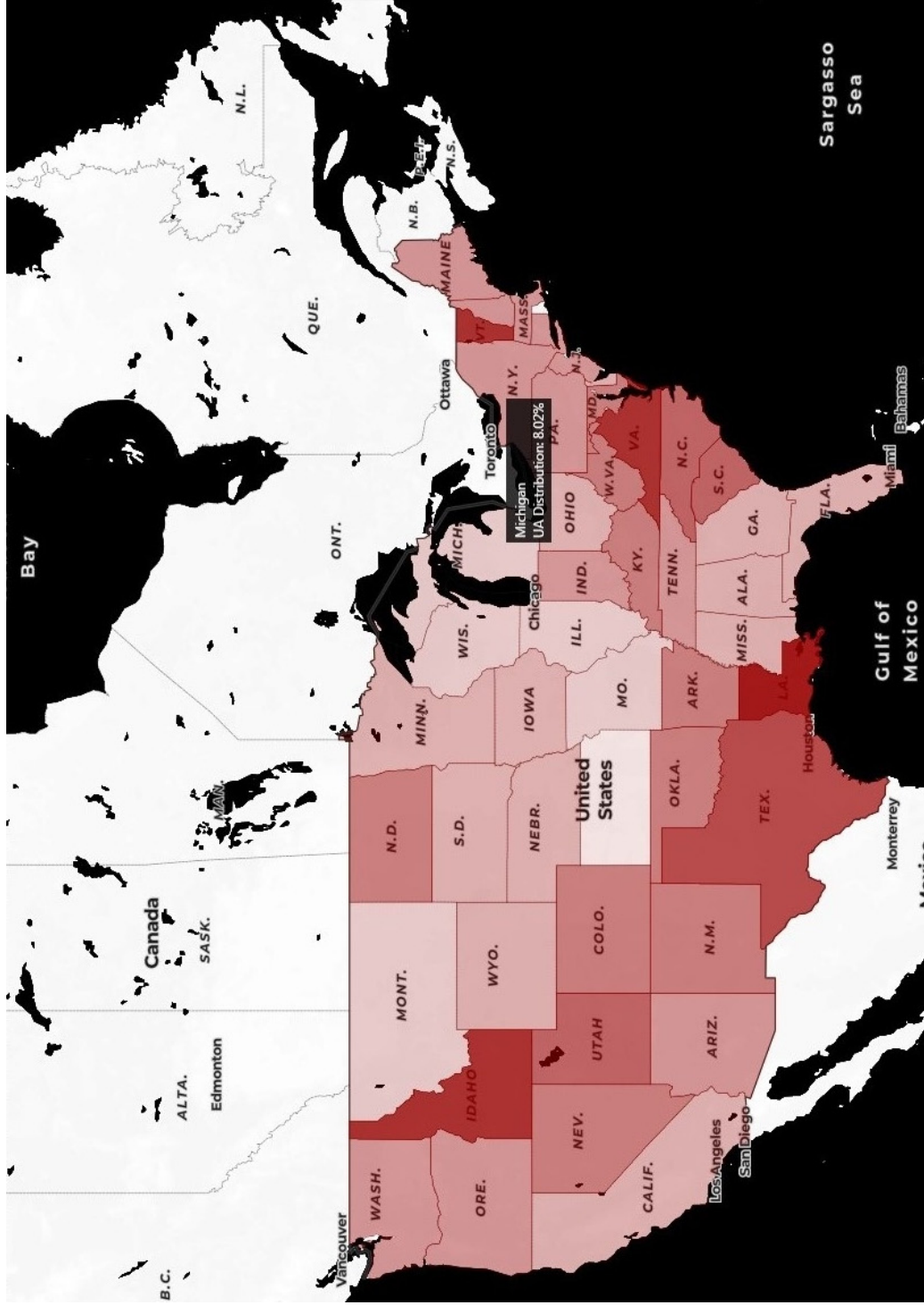
ACHE SOURCES ALL UNDERGRADUATE STUDENTS FROM ALABAMA BY COUNTY

DATA SOURCE: UA FACTBOOK



TALLOPOOSA COUNTY 483 STUDENTS

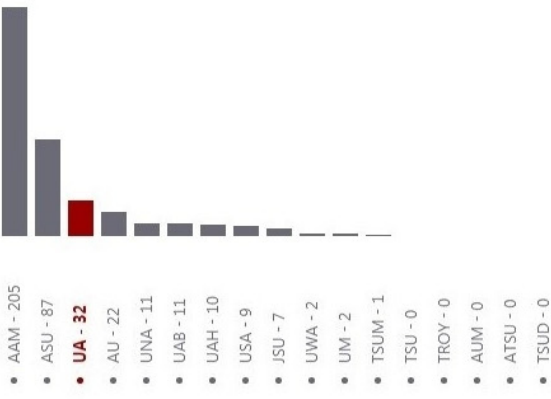




ACHE SOURCES OF UNDERGRADUATES
FROM ALABAMA BY STATE

2004 - +

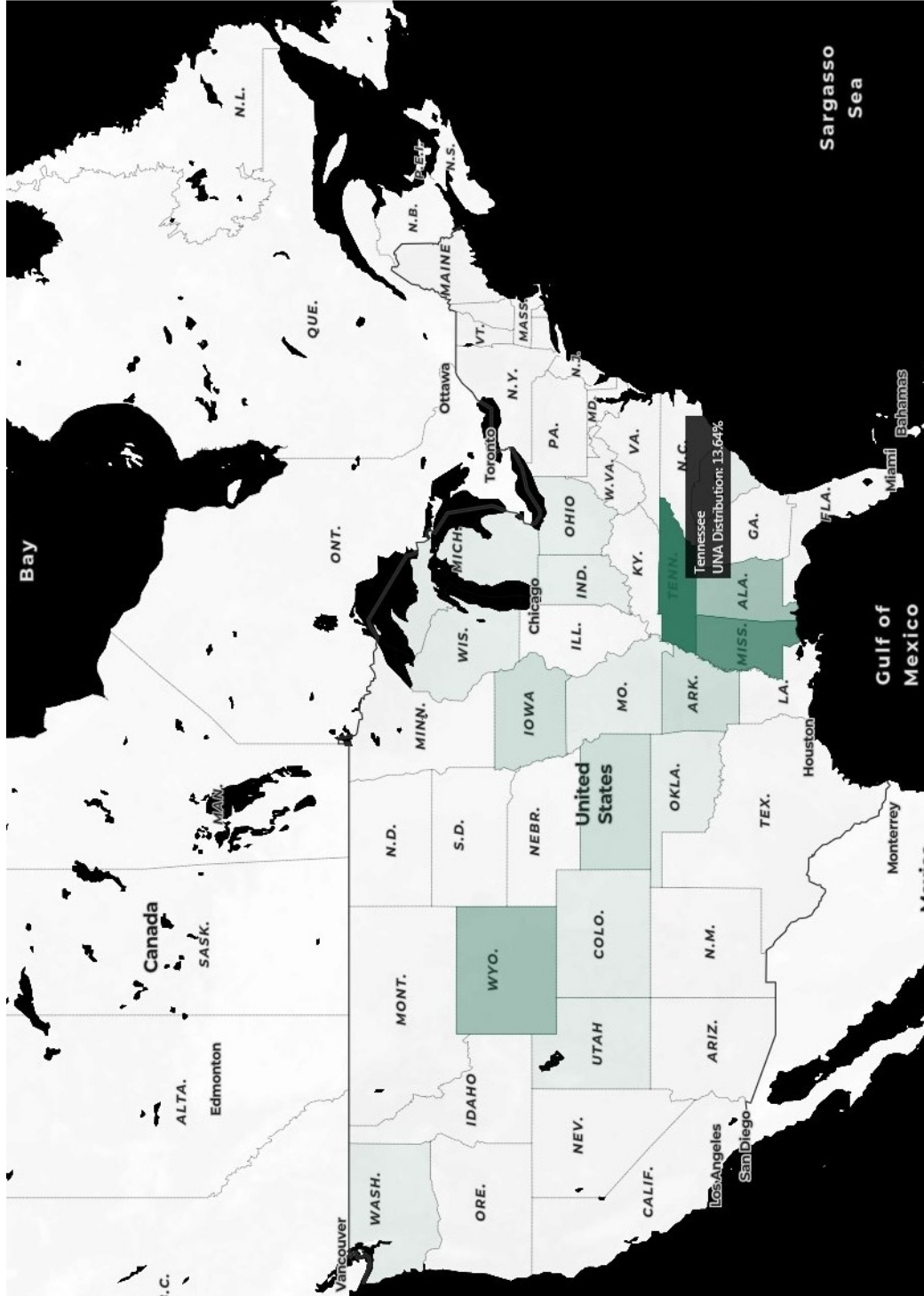
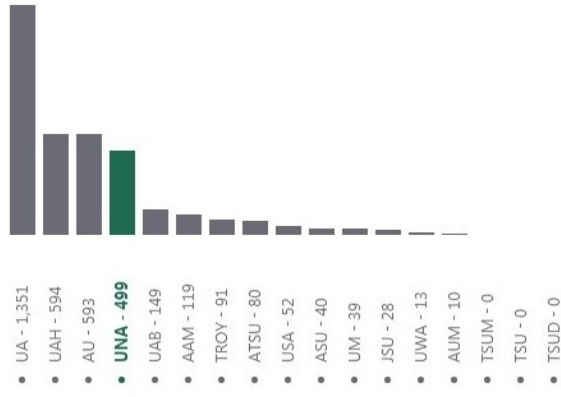
MICHIGAN 399 STUDENTS



ACHE SOURCES OF UNDERGRADUATES
FROM ALABAMA BY STATE

2017

TENNESSEE 3658 STUDENTS



Undergraduate Enrollment by State of Origin:

Fall 2004 to Fall 2017

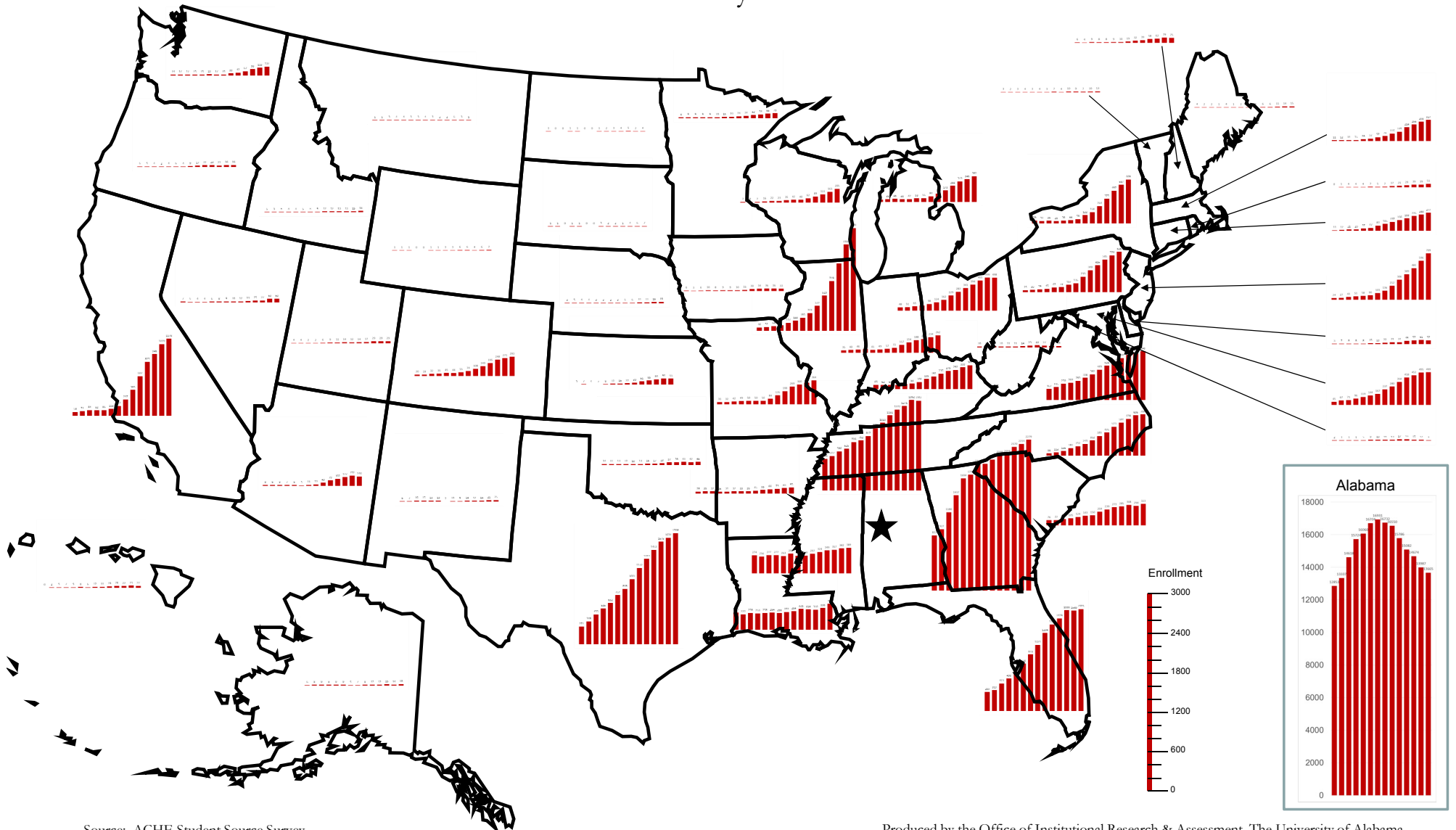
The University of Alabama

Fall	AL	AK	AZ	AR	CA	CO	CT	DE	DC	FL	GA	HI	ID	IL	IN	IA	KS	KY	LA	ME	MD	MA	MI	MN	MS	MO
2004	12,853	6	8	28	58	20	11	3	2	289	833	0	5	46	35	6	3	65	265	4	45	11	32	8	274	31
2005	13,337	8	6	35	71	19	12	7	1	319	927	2	3	52	40	3	7	62	239	2	67	12	38	9	256	32
2006	14,618	9	8	32	84	32	21	8	1	423	1,180	5	6	68	46	6	4	61	258	2	71	14	46	9	277	42
2007	15,724	8	7	26	82	35	20	8	1	498	1,437	7	4	82	52	10	2	63	253	1	96	15	38	9	277	49
2008	16,060	9	6	31	86	45	37	8	5	596	1,694	5	4	117	41	8	8	76	258	4	119	28	42	9	263	50
2009	16,704	9	3	32	103	44	47	15	9	728	1,749	8	5	148	49	9	12	83	264	1	144	37	53	10	299	50
2010	16,931	5	11	33	151	55	83	13	10	872	1,912	6	8	193	57	9	16	106	256	2	167	57	56	15	267	50
2011	16,732	7	19	35	247	74	105	22	11	1,021	1,914	12	9	261	72	10	22	155	272	3	237	78	84	19	269	84
2012	16,550	8	43	45	393	108	137	31	13	1,204	1,977	11	12	372	117	16	30	192	284	4	280	116	125	24	297	135
2013	15,786	12	79	55	607	149	166	31	17	1,338	2,048	19	12	529	154	30	51	235	321	6	350	145	173	34	324	199
2014	15,082	12	102	66	825	195	193	49	19	1,429	2,059	28	13	749	188	34	65	275	314	6	418	214	244	43	349	269
2015	14,674	15	127	73	946	248	226	57	15	1,556	2,170	22	13	1,014	204	36	84	292	310	11	452	256	313	54	357	300
2016	13,987	14	152	83	1,099	271	248	61	12	1,549	2,214	29	15	1,300	234	36	96	333	336	14	495	298	346	65	382	328
2017	13,665	18	140	95	1,178	293	277	57	4	1,573	2,279	27	18	1,551	262	33	93	365	399	15	499	327	392	73	389	364
Fall	MT	NE	NV	NH	NJ	NM	NY	NC	ND	OH	OK	OR	PA	RI	SC	SD	TN	TX	UT	VT	VA	WA	WV	WI	WY	
2004	1	3	7	6	24	6	39	98	1	48	14	6	25		76	1	470	271	4	3	167	14	5	7	1	
2005	1	5	5	4	27	7	31	113	0	51	11	5	30	1	77	1	517	348	4	2	195	17	6	8	1	
2006	3	4	4	9	41	16	36	136	0	65	13	4	39	4	93	0	586	455	2	3	250	17	10	7	1	
2007	4	4	4	8	51	15	28	181	1	76	12	2	45	4	105	1	625	546	2	4	264	15	10	16	0	
2008	4	3	6	8	58	13	38	212	1	98	10	4	67	4	124	1	726	632	6	3	293	15	14	22	0	
2009	3	3	8	9	66	13	44	249	0	124	13	6	73	7	143	0	752	752	9	4	338	19	10	23	1	
2010	3	2	9	10	101	2	59	302	0	162	16	4	107	5	150	0	817	848	11	3	392	17	11	35	1	
2011	4	3	10	19	136	10	122	372	1	229	17	9	135	7	204	3	938	1,001	14	7	463	15	11	42	3	
2012	3	6	12	32	212	9	168	426	2	283	23	17	233	17	239	2	1,020	1,172	12	4	524	33	14	40	3	
2013	2	6	19	39	306	14	264	519	3	341	37	22	340	21	273	2	1,132	1,314	14	10	567	42	23	62	6	
2014	2	11	25	58	389	12	375	584	4	394	39	23	416	29	285	1	1,220	1,453	17	9	644	67	30	89	6	
2015	6	11	27	62	481	14	497	639	5	455	43	21	506	39	308	4	1,271	1,575	29	7	693	98	27	122	4	
2016	3	16	50	79	596	21	587	696	2	499	42	26	570	39	294	6	1,362	1,634	29	10	715	118	19	161	6	
2017	1	19	50	75	709	25	669	708	4	498	45	26	626	51	323	7	1,351	1,708	29	13	748	137	18	205	7	
		2004	2005	2006	2007	2008	2009	2010	2011	2012	2013	2014	2015	2016	2017											
In-state		12,853	13,337	14,618	15,724	16,060	16,704	16,931	16,732	16,550	15,786	15,082	14,674	13,987	13,665											
Out-of-state		3,385	3,696	4,511	5,103	5,911	6,580	7,477	8,817	10,480	12,462	14,340	16,095	17,590	18,773											
Total		16,238	17,033	19,129	20,827	21,971	23,284	24,408	25,549	27,030	28,248	29,422	30,769	31,577	32,438											
Percent OOS		20.8	21.7	23.6	24.5	26.9	28.3	30.6	34.5	38.8	44.1	48.7	52.3	55.7	57.9											

Source: ACHE Student Source Survey

Undergraduate Enrollment by State of Origin: Fall 2004 to Fall 2017

The University of Alabama



Source: ACHE Student Source Survey

Produced by the Office of Institutional Research & Assessment, The University of Alabama

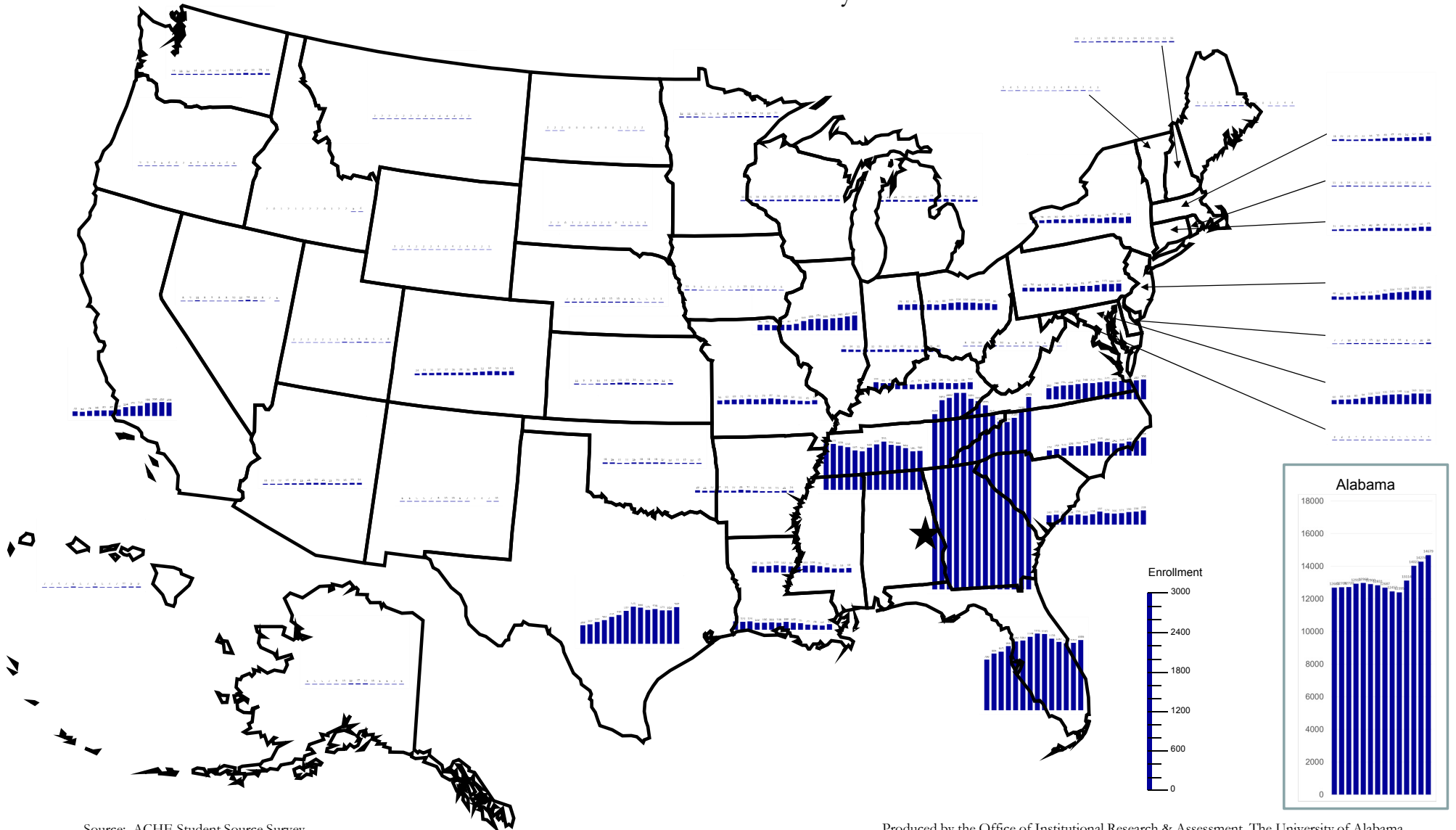
Undergraduate Enrollment by State of Origin:

Fall 2004 to Fall 2017

Auburn University

Fall	AL	AK	AZ	AR	CA	CO	CT	DE	DC	FL	GA	HI	ID	IL	IN	IA	KS	KY	LA	ME	MD	MA	MI	MN	MS	MO
2004	12,683	6	10	29	70	24	21	7	3	790	2,644	7	2	86	38	13	11	104	128	5	60	18	22	12	101	56
2005	12,704	5	11	21	63	31	24	7	2	885	2,851	7	0	86	34	9	7	88	123	3	68	22	27	11	93	62
2006	12,720	5	12	27	76	31	22	10	3	915	2,883	5	1	79	31	6	7	91	124	2	69	21	26	11	101	69
2007	12,917	7	16	34	84	37	24	9	4	999	2,999	7	2	84	35	4	10	81	103	5	80	21	23	10	110	71
2008	12,968	9	17	25	89	37	34	11	3	1,076	2,992	8	1	84	32	2	14	76	106	8	94	22	22	9	102	78
2009	12,900	10	15	27	87	36	40	13	3	1,087	2,874	6	2	97	36	4	19	71	111	7	110	26	27	8	93	72
2010	12,831	13	21	36	102	39	46	10	5	1,149	2,840	7	2	141	31	5	23	75	108	7	122	32	30	13	90	79
2011	12,687	17	24	31	134	36	44	14	5	1,196	2,775	8	2	165	37	7	23	82	118	5	135	40	44	15	103	87
2012	12,457	12	21	24	151	46	44	12	3	1,189	2,645	6	0	174	40	13	20	95	107	3	143	47	37	18	108	78
2013	12,395	10	15	19	159	52	44	14	5	1,120	2,526	4	1	166	32	11	15	94	95	0	148	49	41	23	95	69
2014	13,114	6	19	19	199	60	44	8	5	1,067	2,518	7	2	178	31	9	14	93	79	1	138	52	35	18	77	60
2015	14,022	6	16	19	206	59	52	7	5	1,045	2,589	11	2	190	38	7	15	88	69	2	160	57	28	18	59	51
2016	14,274	7	23	21	213	54	60	10	4	1,054	2,694	9	5	207	38	7	12	95	64	4	161	60	31	19	59	45
2017	14,679	6	24	24	204	61	63	16	4	1,099	2,901	9	6	223	40	6	16	107	81	4	158	65	27	21	68	61
Fall	MT	NE	NV	NH	NJ	NM	NY	NC	ND	OH	OK	OR	PA	RI	SC	SD	TN	TX	UT	VT	VA	WA	WV	WI	WY	
2004	2	7	8	11	48	6	34	134	2	79	18	9	54	11	140	2	702	283	2	5	169	14	8	15	3	
2005	2	8	9	7	40	6	39	157	2	82	16	9	56	9	150	2	699	302	2	4	198	11	10	15	2	
2006	2	8	11	7	45	5	41	173	2	85	11	7	54	14	135	0	669	332	2	5	216	12	10	18	4	
2007	2	7	8	13	52	5	50	198	0	76	11	5	57	10	138	1	650	364	2	3	218	14	7	19	2	
2008	2	8	7	12	60	7	49	203	0	85	15	6	61	11	156	2	601	410	2	3	236	13	11	19	2	
2009	2	10	8	15	63	8	55	215	0	79	18	6	54	10	137	2	584	446	1	3	248	15	10	20	2	
2010	2	10	8	13	72	10	61	245	0	88	18	2	67	9	158	1	639	512	1	3	252	14	6	22	4	
2011	3	10	10	9	91	10	70	274	0	105	18	4	66	10	197	2	692	576	9	3	265	14	6	24	2	
2012	1	8	13	14	104	6	70	263	0	114	17	7	81	10	174	1	733	558	6	4	279	21	8	23	4	
2013	3	6	18	13	112	7	65	242	0	110	10	3	85	10	166	0	682	526	9	8	268	24	10	22	2	
2014	3	5	13	12	118	3	78	245	1	109	11	5	99	13	173	1	668	539	8	6	283	27	9	21	4	
2015	3	5	8	11	135	4	88	270	1	100	12	5	113	10	190	1	632	519	5	7	286	22	6	25	3	
2016	2	3	2	12	133	7	80	284	2	103	10	6	110	7	198	1	586	513	4	4	289	29	7	29	2	
2017	2	2	6	16	140	10	93	337	2	86	12	5	119	8	218	1	592	567	8	3	306	22	9	25	1	
		2004	2005	2006	2007	2008	2009	2010	2011	2012	2013	2014	2015	2016	2017											
In-state		12,683	12,704	12,720	12,917	12,968	12,900	12,831	12,687	12,457	12,395	13,114	14,022	14,274	14,679											
Out-of-state		6,033	6,377	6,495	6,771	6,932	6,892	7,243	7,617	7,555	7,208	7,193	7,260	7,379	7,884											
Total		18,716	19,081	19,215	19,688	19,900	19,792	20,074	20,304	20,012	19,603	20,307	21,282	21,653	22,563											
Percent OOS		32.2	33.4	33.8	34.4	34.8	34.8	36.1	37.5	37.8	36.8	35.4	34.1	34.1	34.9											

Undergraduate Enrollment by State of Origin: Fall 2004 to Fall 2017 Auburn University



Source: ACHE Student Source Survey

Produced by the Office of Institutional Research & Assessment, The University of Alabama

Undergraduate Enrollment by State of Origin:

Fall 2004 to Fall 2017

University of Alabama, Birmingham

Fall	AL	AK	AZ	AR	CA	CO	CT	DE	DC	FL	GA	HI	ID	IL	IN	IA	KS	KY	LA	ME	MD	MA	MI	MN	MS	MO
2004	10,455	3	3	4	20	2	1	3	3	70	139	0	2	23	10	1	1	11	24	1	7	0	11	4	76	10
2005	10,516	5	5	5	17	2	1	2	2	64	153	0	2	22	12	2	1	8	29	1	13	1	11	3	90	8
2006	10,336	4	4	5	16	1	4	2	2	53	157	1	1	28	10	3	1	8	24	1	8	5	9	3	96	11
2007	9,834	4	1	5	20	4	2	1	0	60	186	3	0	34	5	3	5	8	20	0	9	6	9	4	96	9
2008	9,463	2	3	7	24	4	1	1	2	56	174	3	0	33	9	3	6	7	21	0	9	2	11	4	84	6
2009	9,724	3	3	7	17	2	3	0	2	55	192	0	0	23	8	1	6	10	21	0	10	1	13	1	88	9
2010	10,105	3	3	6	24	0	2	1	1	62	189	1	0	21	10	1	6	7	17	1	11	4	10	3	102	14
2011	10,219	3	2	2	22	2	3	1	3	56	214	1	0	29	9	2	2	15	16	1	13	3	7	5	109	8
2012	10,311	2	5	7	31	8	5	1	4	59	224	1	0	32	10	3	2	14	19	1	9	1	9	7	106	10
2013	10,401	4	8	11	30	11	5	2	3	82	239	1	1	45	9	4	2	14	24	1	14	5	13	1	106	12
2014	10,395	2	5	7	47	8	7	2	4	109	276	1	1	42	12	7	4	15	19	0	16	8	15	1	108	9
2015	10,191	1	7	11	46	13	6	3	3	110	271	4	1	49	8	5	3	11	28	0	16	5	18	4	103	12
2016	10,757	2	9	11	54	13	6	2	6	129	319	4	1	53	10	4	4	14	45	0	22	7	22	5	135	16
2017	10,078	1	11	10	62	15	7	2	6	130	352	6	2	56	9	10	5	18	49	1	27	4	17	5	128	23
Fall	MT	NE	NV	NH	NJ	NM	NY	NC	ND	OH	OK	OR	PA	RI	SC	SD	TN	TX	UT	VT	VA	WA	WV	WI	WY	
2004	1	3	2	1	6	4	13	16	0	17	5	4	7	0	10	0	71	37	0	0	20	8	0	4	1	
2005	0	3	1	0	6	2	14	14	1	11	11	5	10	0	9	1	68	36	1	0	18	10	1	4	2	
2006	0	2	1	0	3	3	17	13	0	17	11	3	7	1	11	0	66	42	1	0	14	9	1	7	2	
2007	0	2	2	0	4	1	16	13	1	17	5	2	6	1	10	0	67	47	0	1	15	11	1	4	2	
2008	0	1	1	0	3	0	13	13	0	13	6	2	8	0	13	0	53	47	1	1	15	7	2	5	0	
2009	1	0	1	1	4	0	4	13	0	13	6	2	6	0	17	1	58	47	2	1	13	8	1	6	0	
2010	2	3	2	2	2	2	7	13	0	14	3	1	9	0	14	0	74	43	1	1	13	6	0	4	0	
2011	2	4	1	2	6	1	8	17	2	12	2	1	6	0	14	0	65	38	2	1	8	3	1	6	0	
2012	1	5	1	3	3	1	14	17	2	12	1	1	11	0	14	0	76	37	1	1	13	5	1	6	0	
2013	0	3	1	2	8	1	16	24	3	13	6	3	11	0	12	1	95	40	1	0	25	7	1	9	0	
2014	0	3	5	3	9	2	16	29	4	17	7	2	10	1	19	1	111	57	1	0	23	6	1	10	0	
2015	2	3	5	3	11	3	18	34	1	16	10	2	17	2	19	0	120	55	1	0	27	7	2	11	3	
2016	1	3	5	3	12	4	28	34	0	24	12	2	22	1	22	0	162	73	1	0	25	6	3	13	1	
2017	1	2	8	1	15	4	27	39	1	29	12	2	23	3	21	0	149	83	1	0	35	9	2	11	1	
		2004	2005	2006	2007	2008	2009	2010	2011	2012	2013	2014	2015	2016	2017											
In-state		10,455	10,516	10,336	9,834	9,463	9,724	10,105	10,219	10,311	10,401	10,395	10,191	10,757	10,078											
Out-of-state		659	687	688	722	676	680	715	730	796	929	1,062	1,110	1,350	1,435											
Total		11,114	11,203	11,024	10,556	10,139	10,404	10,820	10,949	11,107	11,330	11,457	11,301	12,107	11,513											
Percent OOS		5.9	6.1	6.2	6.8	6.7	6.5	6.6	6.7	7.2	8.2	9.3	9.8	11.2	12.5											

Source: ACHE Student Source Survey

Undergraduate Enrollment by State of Origin:

Fall 2004 to Fall 2017

University of Alabama, Birmingham

